

D-bay
S A H E L

An abstract architectural rendering featuring white, three-dimensional geometric blocks of varying heights and widths. Two thick, vibrant orange lines swoosh across the upper left portion of the image, curving over the blocks. The background is a solid, muted grey. The overall style is minimalist and modern.

FLOOR PLANS



The Master Plan

D-Bay Sahel features an immaculate master plan designed by Italian world-class architects Gianluca Peluffo & Partners. With a vision to place waterfront refinement within reach, D-Bay possesses an abundance of water bodies across 200 feddans, including a 800-meter-long pristine seacoast, an expansive lagoon, and private swimming pools. Here, a sense of community is conceptualized with a focus on innovation and connectivity. Its exclusive access to desirable destinations also bestows

a notion of belonging and continuity. This idyll setting at D-Bay exhibits the perfect balance between natural splendor and high-end living, entirely personifying the essence of an exceptional seaside experience.



The Master Plan

D-Bay Sahel features an immaculate master plan designed by Italian world-class architects Gianluca Peluffo & Partners. With a vision to place waterfront refinement within reach, D-Bay possesses an abundance of water bodies across 200 feddans, including a 800-meter-long pristine seacoast, an expansive lagoon, and private swimming pools. Here, a sense of community is conceptualized with a focus on innovation and connectivity. Its exclusive access to desirable destinations also bestows

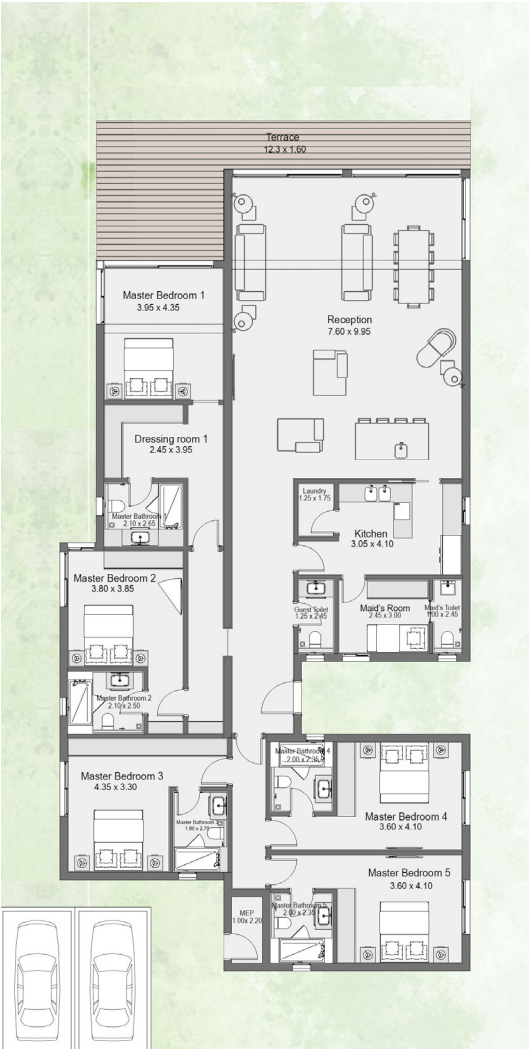
a notion of belonging and continuity. This idyll setting at D-Bay exhibits the perfect balance between natural splendor and high-end living, entirely personifying the essence of an exceptional seaside experience.





1st Row Beach Villa

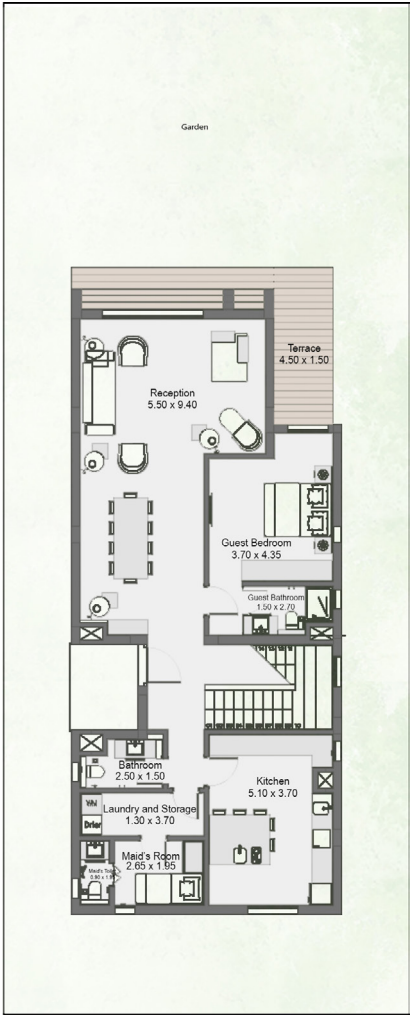
370 m²



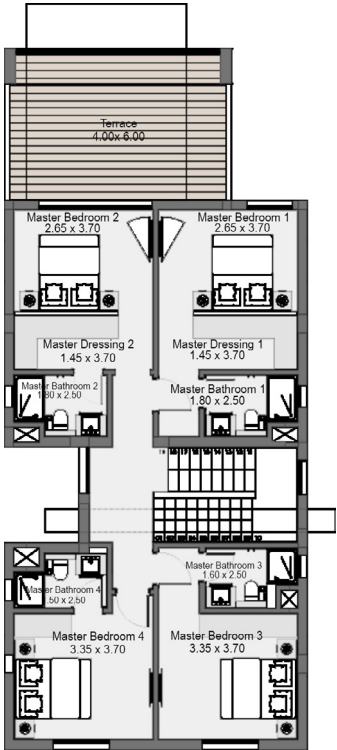


2nd Row Beach Villa

280 m²



Ground Floor

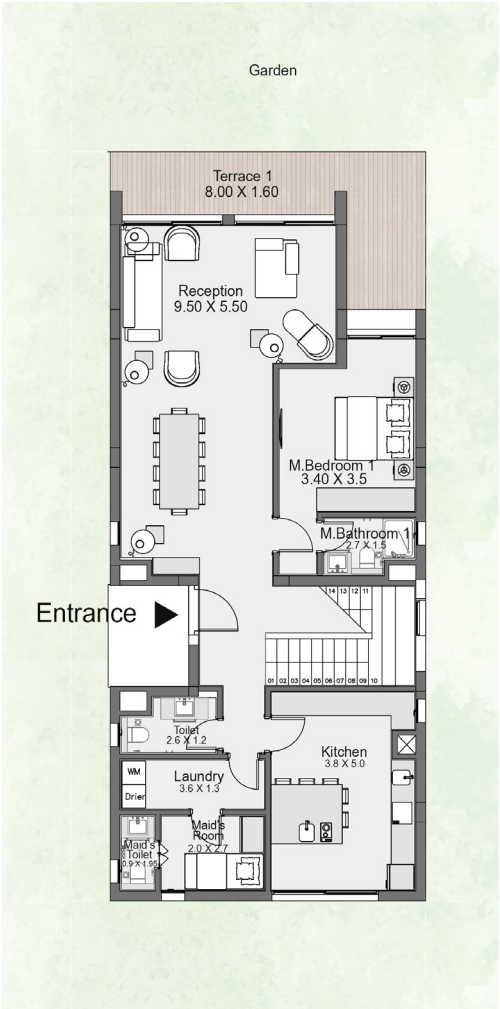


First Floor

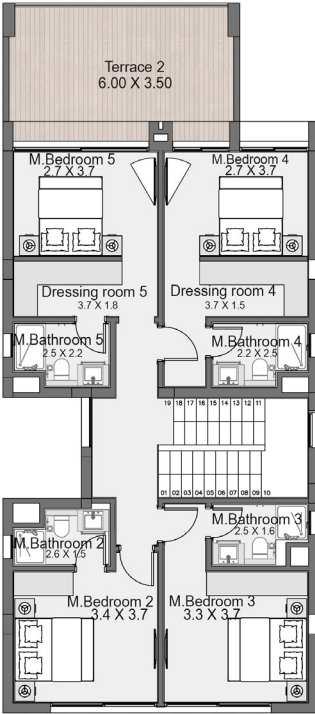


Lagoonfront Villa

280 m²



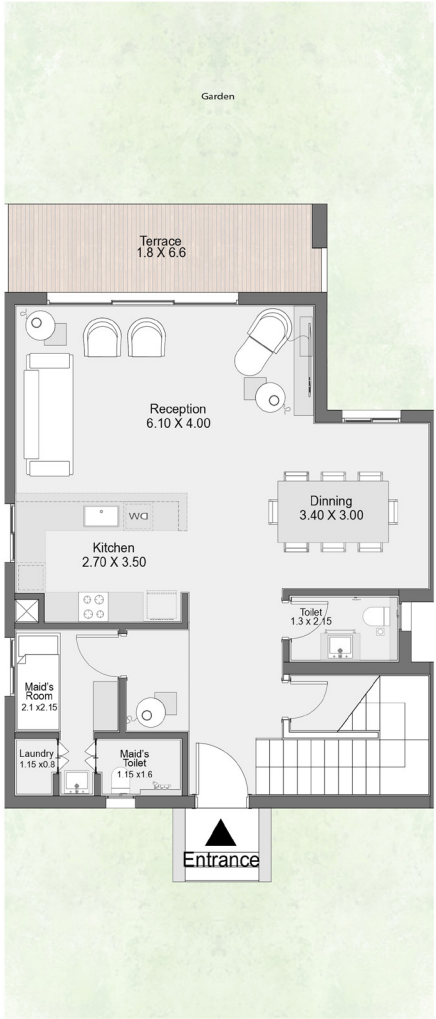
Ground Floor



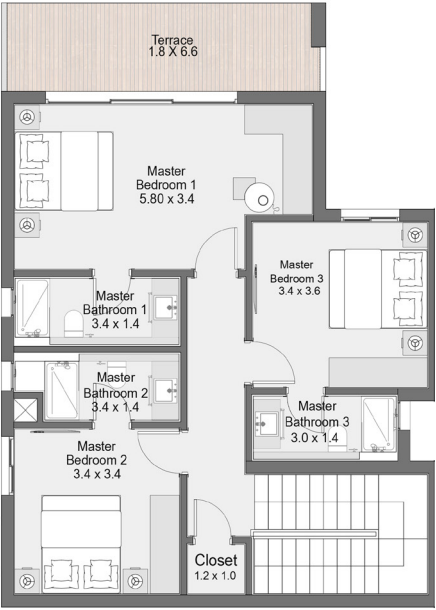
First Floor



Jr. Twinhouse
200 m²



Ground Floor

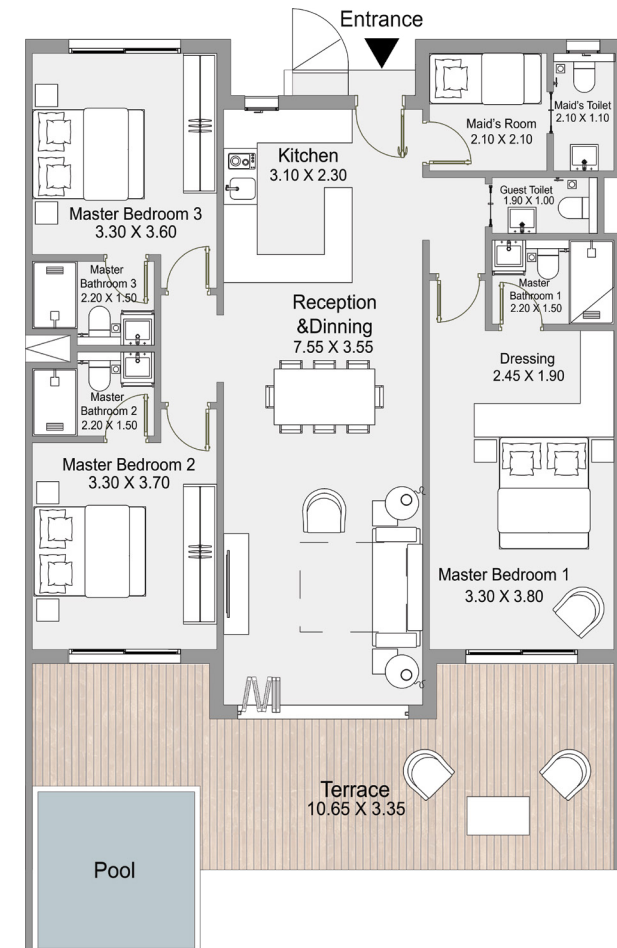


First Floor



Seaside Condo - 3 bedrooms

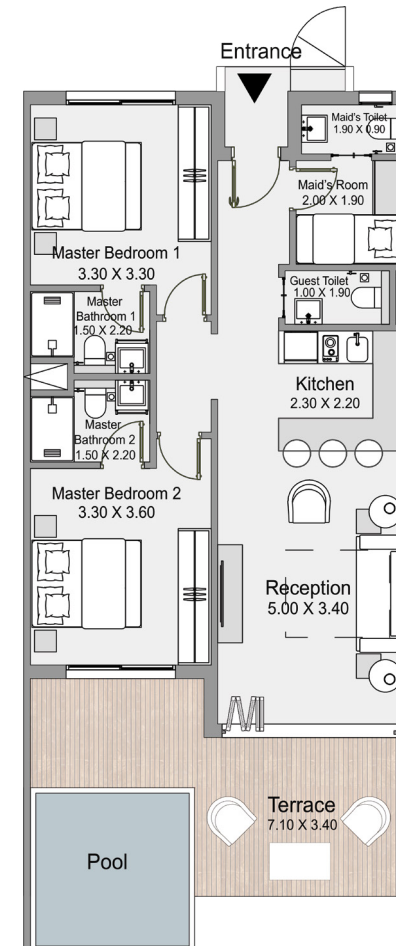
155 m²





Seaside Condo - 2 bedrooms

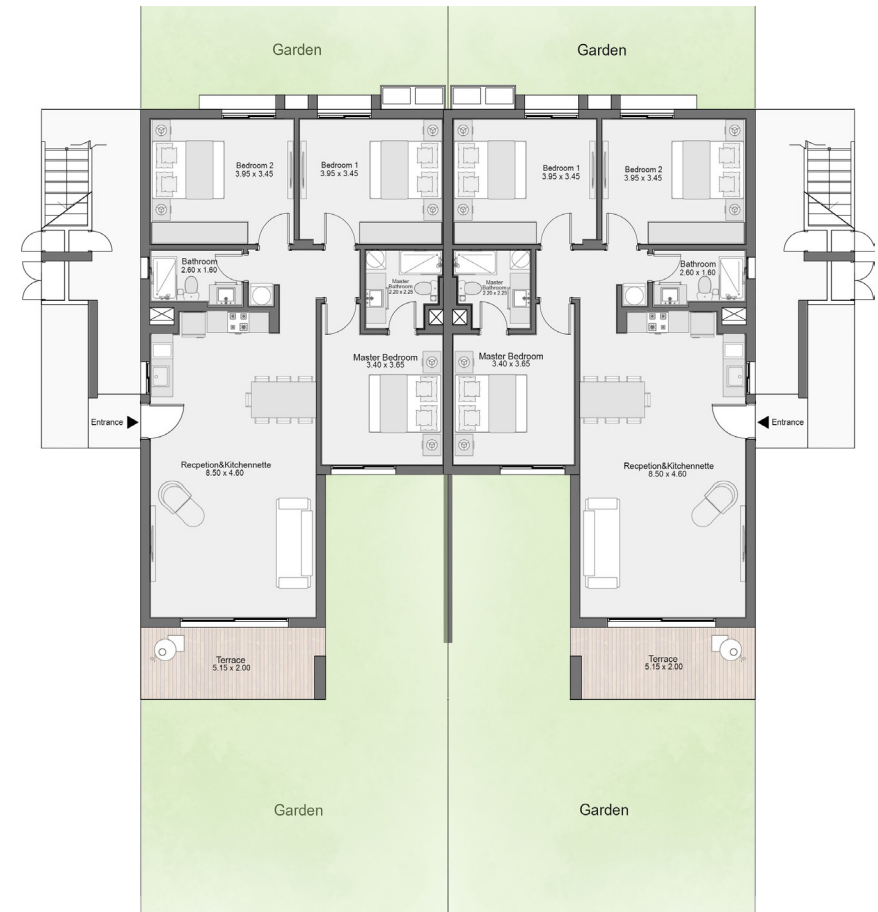
105 m²





Garden Twin Chalet

130 m²





Jr. Garden Twin Chalet

120 m²





Twin Chalet

120 m²

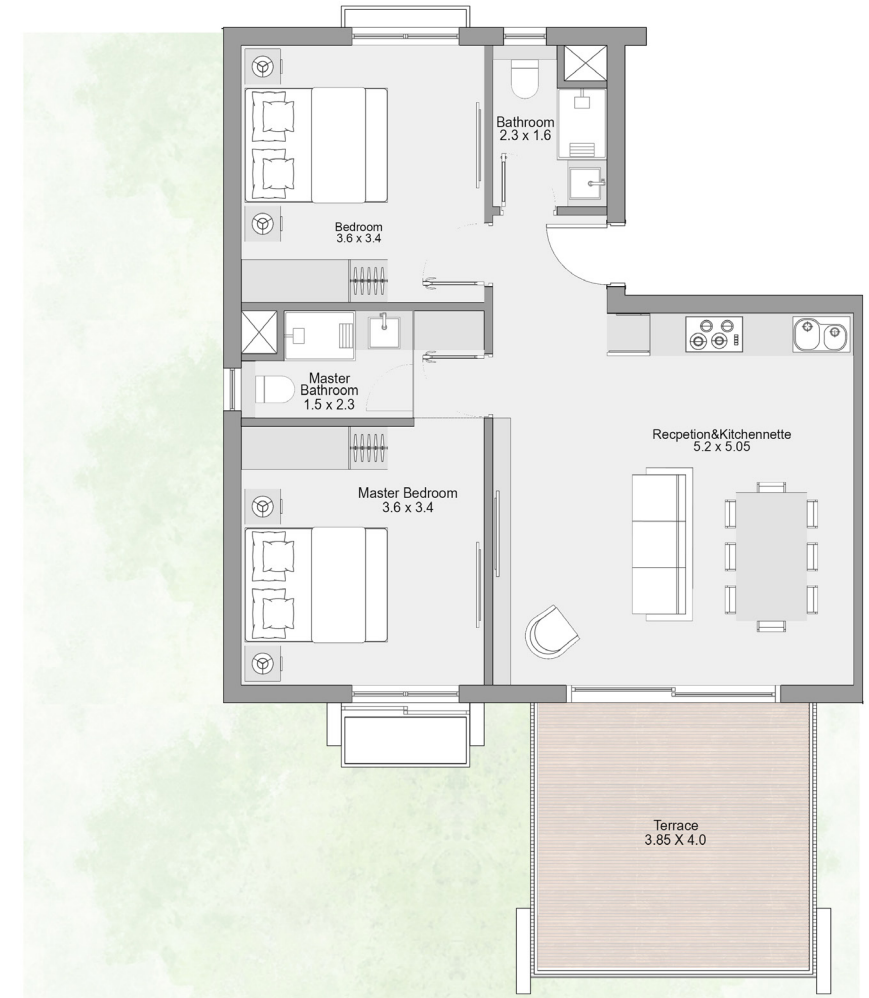




Jr. Chalet 2

100 m²

Ground Floor





Jr. Chalet 2

100 m²

First Floor

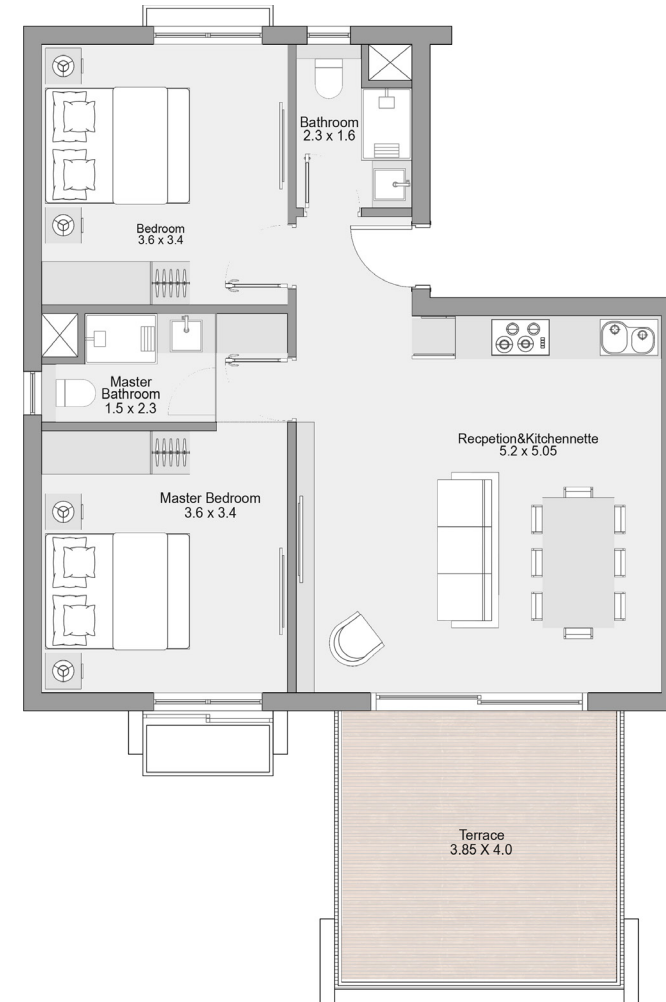




Jr. Chalet 2

100 m²

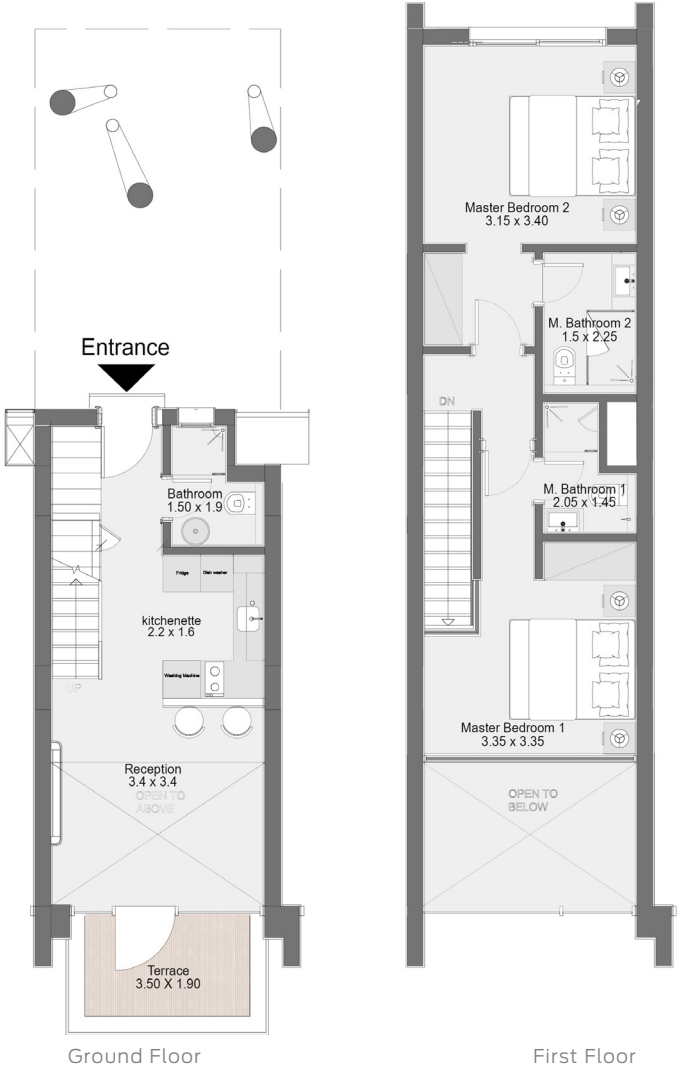
Second Floor





Loft

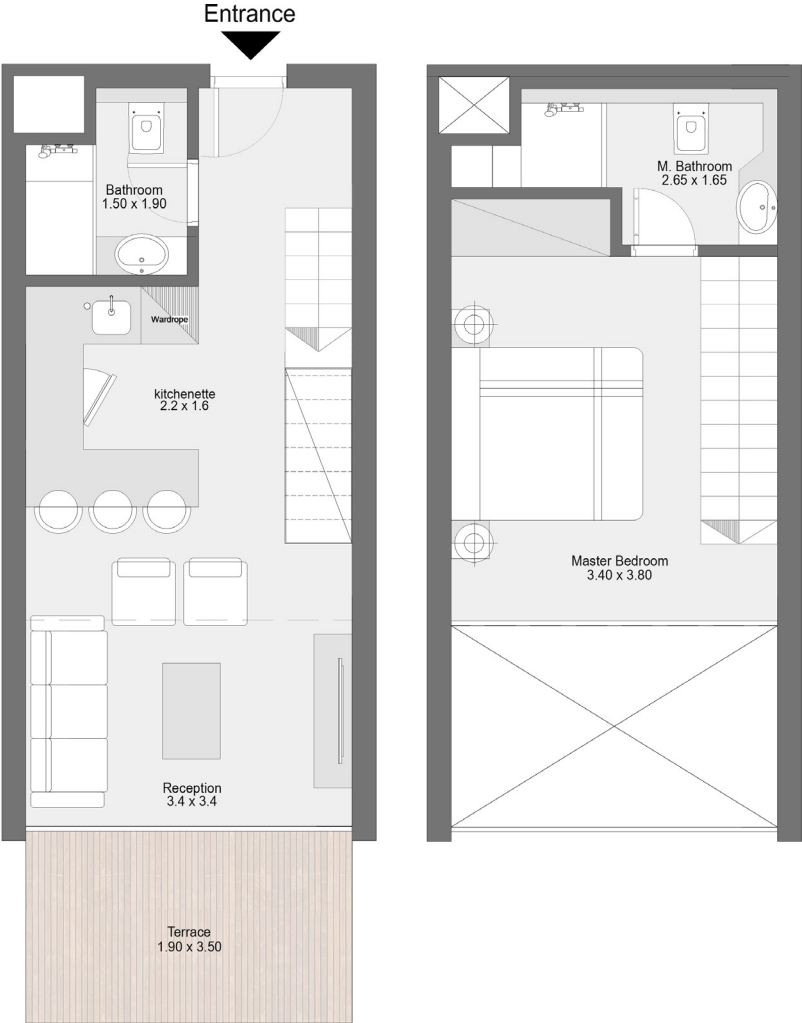
95 m²





Jr. Loft

70 m²



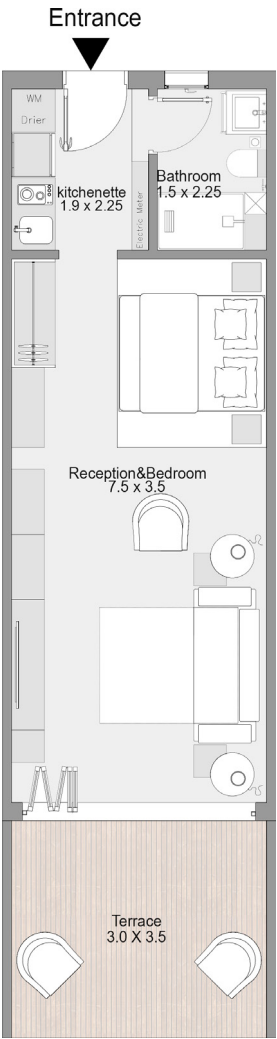
Ground Floor

First Floor



Beach Cabin

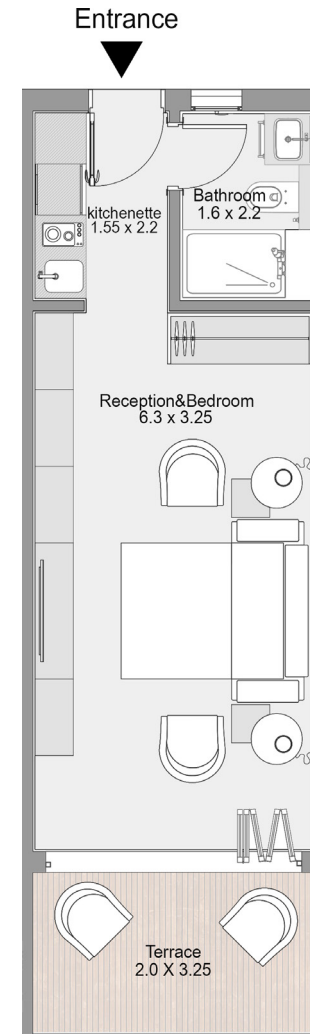
50 m²





Jr. Beach Cabin

40 m²



a life

Experience the breathtaking views of the Mediterranean, surrounded by the tranquil vistas of the lagoon, with the momentum of living by the sea. D-Bay is where exceptional experiences meet seaside splendor.

extra-
ordinaire





HEAD OFFICE

20 Aisha Al Taimoria Street
Garden City - Beside Four
Seasons Nile Plaza Hotel
Cairo, Egypt.
Tel: +202 27929892
Hotline: 16094

SALES OFFICES

New Cairo Sales Office
75 Road 90, 5th Settlement New Cairo,
Cairo, Egypt. Postal Code: 11843
Tel: +202 28104505

tatweermisr.com

Disclaimer

All plans, materials, dimensions or drawings herein contained are approximate and not to scale. The developer reserves the right to apply further revisions and/or changes to any such plans, materials, dimensions or drawings. This document contains proprietary information that cannot be reproduced or divulged, in whole or in part, without written authorization from the developer.

TaTweer.^{MISR}